



FAHRENHEIT

UNIFORMS

Manufactured by





Welcome to Fahrenheit Uniforms, a division of Zone West Enterprises Ltd.

Canadian owned and operated since 1992, we specialize in the manufacturing of uniforms, clothing accessories and custom crests/patches for Teams, Corporate Clients, Community Associations and the Emergency Services Industry.

We are your one stop supplier, the single source for uniform needs. From the office to the rink to the line of duty, Fahrenheit Uniforms is here to help. With top quality custom made products, prompt & courteous service and competitive pricing, you'll know you've made the right choice.

The Fahrenheit Staff are committed to the highest standards in service and product quality no matter the size of the order. Whether our Art Department is designing your crest/patch or our Seamstresses are tailoring your uniform, we provide our customers with exactly what they need.

Please look though our catalogue and don't hesitate to contact us with any questions.

Sincerely,

The Staff at Zone West & Fahrenheit Uniforms

FOLLOW US ON SOCIAL MEDIA AND SEE WHAT WE'RE UP TO!



@zonewestcanada

Table of Contents



STATION WEAR

Job Shirts.....	2
Uniform Shirts.....	3
Cargo Pants.....	4
Station & Dress Pants.....	5
5 in 1 Jacket.....	6

DRESS UNIFORMS

Tunic Jacket.....	7
Braids / Service Bars / Parade Gloves.....	8
Memorial Arm Band / Tunic Buttons.....	8
Caps / Ties / Custom Dress Skirt.....	9

TIE CLIPS

Stock / CAFC / Fire Dept. & Fire Rescue Styles.....	10
-----------------------------------------------------	----

EPAULETTES

Custom & Stock.....	11
OAFC Braid.....	12
CAFC Braid.....	13

METAL PRODUCTS

Custom Made Products / Service Pins.....	14
Collar Dogs.....	15
Cap Badges.....	16
Name Bars.....	16

BELTS & BUCKLES

Leather Belt / Belt Buckle.....	17
Web Belt Buckles.....	17

CRESTS / PATCHES

Embroidered Shoulder Crests & NOMEX Crests.....	18
-------------------------------------------------	----

CASUAL WEAR

Embroidered, Heat-Transfer & Silk-Screened Products.....	19
Custom Manufactured Hats.....	19

HELMET SHIELDS & DECALS

Embroidered Helmet Shields.....	20
Custom Decals.....	20
Stock Reflective Helmet Decals.....	21

STATION WEAR

Fahrenheit Job Shirts

AVAILABLE STYLES & SIZES:

- **REGULAR:** XS - 4XL
- **TALL:** MED - 4XL
Mens Tall - longer body and sleeves than the regular fit.
- **COLOUR:** Dark Navy
- **FABRIC:** 20% Polyester 80% Cotton



A CLIENT FAVOURITE!



FEATURES (ALL JOB SHIRTS)

- REINFORCED ELBOWS
- RIGHT CHEST RADIO POCKET
w/ VELCRO CLOSURE & PEN HOLDER
- EPAULETTE STRAPS
- WAIST SIDE POCKETS
- 1/4 BRASS CHEST ZIPPER
- COLLAR POINTS INCLUDE A HIDDEN BUTTON
AND INTERIOR COLLAR STAY FOR A CRISP
LOOK WITH NO CURLING, RIBBED CUFF AND
WAIST BAND FOR ADDED COMFORT.



**EMBELLISHMENTS
AVAILABLE!**

Call for pricing.

STATION WEAR

Uniform Shirts - STANDARD & TACTICAL

AVAILABLE STYLES & SIZES:

- **LONG & SHORT SLEEVED - MENS**

REGULAR: XS - 6XL

TALL: MED - 6XL

Mens Full Cut: Straighter sided body for a fuller fit.

Mens Taper Cut: Slightly contoured body for a slimmer fit.

Mens Tall: Longer body and sleeves than the regular fit.

Long Sleeve Shirts: Includes 2 buttons on the cuff for an adjustable fit.

- **LONG & SHORT SLEEVED - LADIES**

XS - 2XL

Side chest darts and slightly contoured body for a more feminine fit.

Long Sleeve Shirts: Includes 2 buttons on the cuff for an adjustable fit.

- **COLOURS:** Dark Navy, Light Blue & White

- **FABRIC:** 65% Polyester 35% Cotton



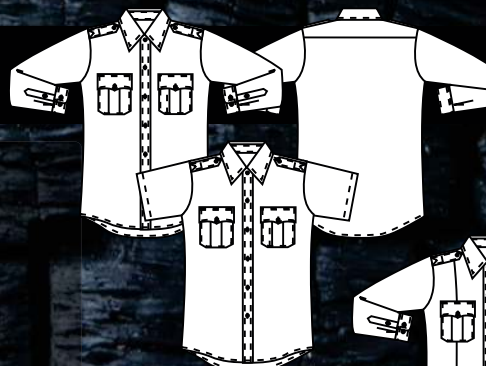
Ladies



Mens

FEATURES (ALL UNIFORM SHIRTS)

- 2 FRONT POCKETS w/ DOUBLE VELCRO CLOSURE & ORNAMENTAL DYED TO MATCH CENTRE BUTTON
- 7 BUTTON FRONT PLACKET
- LEFT POCKET INCLUDES A PEN ACCESS
- BUTTON DOWN EPAULETTE STRAPS
- COLLAR INCLUDES PLASTIC COLLAR STAYS TO PREVENT CURLING AND KEEP CRISP LOOKING OVER NUMEROUS WASHES.
- CUSTOMIZABLE OPTIONS FOR MIC TAB & SEWN BUTTON-HOLE FOR METAL BADGES!



STANDARD:
Uncreased front & back of shirt.



TACTICAL:
Front & back of shirt include permanently sewn tactical creases.

STATION WEAR

Cargo Pants

Mens

FEATURES (ALL CARGO PANTS)

- 2 FRONT POCKETS
- 2 BACK POCKETS
- RIGHT & LEFT-SIDE CARGO POCKET (w/ A SECONDARY SIDE POCKET)
- BOTH CARGO POCKETS FEATURE A VELCRO FLAP CLOSURE
- 6-7 WIDE BELT LOOPS (DEPENDANT ON WAIST SIZE)
- LEFT SIDE HIDDEN ZIPPER POCKET
- COMBINATION HIDDEN BUTTON ANCHOR (FRENCH FLY)
- JEAN STYLE BUTTON WAIST CLOSURE
- METAL ZIPPER
- ANTI SLIP INNER WAISTBAND
- REINFORCED KNEE
- UNHEMMED INSEAM IS APPROX. 36"

COMFORT WAIST (ALL PANTS)

- HIDDEN RETRACTABLE WAISTBAND FOR EXTRA COMFORT WHEN SITTING OR ENGAGED IN ACTIVE MOVEMENT.

LADIES (ALL PANTS)

- LOWER RISE AS WELL AS OVERALL CUT FOR A MORE COMFORTABLE FEMALE FIT.
- ****NEW** CW ULTRA**
- ALL NEW DESIGN AND FEATURES RIP STOP FABRIC WITH 3% LYCRA FOR ULTIMATE COMFORT.

Ladies



Quick Access Pocket



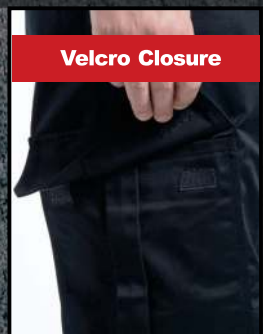
Large Back Pocket



Double Pen Slots



Hidden Zipper Pocket



Velcro Closure

AVAILABLE STYLES & SIZES:

- **COMFORT WAIST - Mens**
28, 30, 32, 34, 36, 38, 40, 42, 44, 46, 48, 50, 52, 54, 56, 58
- **COMFORT WAIST - Ladies**
24, 26, 28, 30, 32, 34, 36, 38, 40, 42, 44

- **COLOUR:** Dark Navy
- **FABRIC:** 65% Polyester 35% Cotton

STATION WEAR

Station Pants

FEATURES (ALL STATION PANTS)

- 2 FRONT POCKETS
- 2 BACK POCKETS
- 6-7 WIDE BELT LOOPS (DEPENDANT ON WAIST SIZE)
- COMBINATION HIDDEN BUTTON ANCHOR (FRENCH FLY)
- JEAN STYLE BUTTON WAIST CLOSURES
- METAL ZIPPER
- ANTI-SLIP INNER WAISTBAND
- PERMANENT FRONT CREASE
- UNHEMMED INSEAM IS APPROX. 36"

AVAILABLE STYLES & SIZES:

- COMFORT WAIST - **Mens**
28, 30, 32, 34, 36, 38, 40, 42, 44, 46, 48, 50, 52, 54, 56, 58
- COMFORT WAIST - **Ladies**
24, 26, 28, 30, 32, 34, 36, 38, 40, 42, 44



- COLOUR: Dark Navy
- FABRIC: 65% Polyester 35% Cotton

Dress Pants - The Perfect Look for Formal Functions!



FEATURES (ALL DRESS PANTS)

- 2 FRONT POCKETS,
- 2 BACK POCKETS,
- BACK LEFT POCKET FEATURES A BUTTON/LOOP CLOSURE
- 6-7 WIDE BELT LOOPS (DEPENDANT ON WAIST SIZE)
- COMBINATION HIDDEN BUTTON ANCHOR (FRENCH FLY)
- JEAN BUTTON CLOSURE
- METAL ZIPPER
- ANTI-SLIP INNER WAISTBAND
- PERMANENT FRONT CREASE
- UNHEMMED INSEAM IS APPROX. 36"

AVAILABLE STYLES & SIZES:

- COMFORT WAIST - **Mens**
28, 30, 32, 34, 36, 38, 40, 42, 44, 46, 48, 50, 52, 54, 56
- COMFORT WAIST - **Ladies**
26, 28, 30, 32, 34, 36, 38, 40, 42, 44, 46

- COLOUR: Dark Navy
- FABRIC: 45% Polyester 55% Wool

STATION WEAR

5-IN-1 JACKET

THE MULTI-TOOL OF JACKETS!



Waterproof
Breathable
Windproof
Designed overall for
LONG-TERM WEAR

AVAILABLE STYLES & SIZES:

- **Mens REGULAR:** S - 4XL
- **Mens TALL:** MED - 4XL
Mens Tall - longer body and sleeves than the regular fit.
- **COLOUR:**
Outer Jacket: Dark Navy reversing to safety yellow/ orange & reflective silver striping.
Inner Fleece Jacket/Vest: Dark Navy
- **FABRIC:**
Outer Jacket: Rugged 1000D Cordura Nylon.
Inner Fleece: Anti Pill Polar Fleece w/ Nylon shoulders.

FEATURES

Outer Jacket: Rugged 1000D Cordura Nylon, 360 degree full telescopic sleeves, zipper equipment access, pleated chest and hip pockets, hidden zipper pocket in right hip pocket, removable button down epaulette straps, 3 position snap cuff for adjustability, snap down storm flap over front zipper, dual entry waist pockets via top flap or outer side, combination snap & velcro pocket flap closures.

Outer Jacket Reversed: When reversed to the yellow side it meets CSA standards for the highest level of visibility (Class 3 compliant), florescent yellow green body, HiVis orange behind 3M retro-reflective stripes, retro-reflective stripes on cuffs, mic tab, navy collar & cuffs to hide dirt, button down epaulette straps, 360 degree full telescopic sleeves, side zipper equipment access, pleated hip pockets, 3 position snap cuff for adjustability, dual entry waist pockets via top flap or outer side with snap closures.

Inner Fleece Jacket: Sleeves zip out to convert into a stand-alone vest or converts the overall jacket into a mid-weight jacket when added to the outer jacket, zippered inside left & right waist pockets, zippered outside left & right waist pockets, snap down epaulette straps, ribbed sleeve cuffs.



Outer Jacket



**Outer Jacket
(Reflective Side)**



Inner Fleece Jacket



**Inner Fleece Jacket
(As a Vest)**

DRESS UNIFORM

Tunic Jackets - Formal



Ladies Cut



Mens Cut

AVAILABLE STYLES & SIZES:

- **SINGLE or DBL BREASTED BLAZER - Mens**
Regular: 38, 40, 42, 44, 46, 48, 50, 52, 54, 56
Tall: 38, 40, 42, 44, 46, 48, 50, 52, 54, 56
- **SINGLE BREASTED BLAZER - Ladies**
Regular: 34, 36, 38, 40, 42, 44, 46, 48
- **COLOUR:** Dark Navy
- **FABRIC:** 45% Polyester 55% Wool

FEATURES (ALL TUNIC JACKETS):

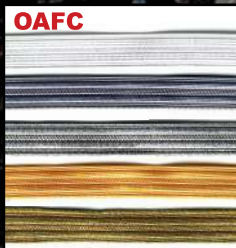
- 2 WAIST POCKETS w/ POCKET FLAPS
- 2 PLEATED CHEST POCKETS w/ SCALLOPED BUTTON DOWN FLAPS & SNAP DOWN POINTS
- 2 HIDDEN INSIDE POCKETS
- SEWN IN FOAM SHOULDER FORMS FOR A CONSISTENTLY CRISP LOOK
- METAL BUTTONS IN GOLD OR SILVER AND CAFC OR FD STAMPED LOGOS
- REAR CENTRE VENT

MENS: DARTS BETWEEN THE CHEST POCKETS AND THE WAIST POCKETS FOR A FORM FIT. BUTTONS UP LEFT SIDE OVER RIGHT.

LADIES: DARTS RUN FROM THE TOP OF SHOULDER TO THE BOTTOM OF THE JACKET FOR A MORE FEMININE FIT. BUTTONS UP RIGHT SIDE OVER LEFT.

DRESS UNIFORM

Braids



White
Silver
Metallic Silver
Gold
Metallic Gold



1 Row Silver
2 Rows Silver



1 Row Gold
2 Rows Gold
3 Rows Gold

BRAID APPLICATION SERVICES ALSO AVAILABLE THROUGH OUR **IN-HOUSE SEAMSTRESSES!**

**Feel free to contact us for more details*



4 Rows Gold

5 Rows Gold

Metal Service Bars

- MAPLE LEAF OR 1" BAR IN SILVER OR GOLD
- INCLUDES ACCESS HOLES FOR SEWING TO TUNICS

MSBG

MSBS

SBMMG

SBMMS



Parade Gloves

- SINGLE SIDED ELASTIC WRIST GATHERING
- DECORATIVE PLEAT ON THE BACK OF HAND
- ONE SIZE FITS MOST



Memorial Arm Bands & Badge Elastics



Tunic Button Styles

CAFC



Chest Buttons

Pocket Buttons

FD



Chest Buttons

Pocket Buttons

DRESS UNIFORM

Caps



AVAILABLE STYLES & SIZES:

- **FITTED or ADJUSTABLE COMFORT FIT:**
6 1/2, 6 5/8, 6 3/4, 6 7/8, 7, 7 1/8, 7 1/4, 7 3/8, 7 1/2, 7 5/8, 7 3/4, 7 7/8, 8
- **COLOUR:** Dark Navy w/ Black Patent High-Gloss finish brim
- **FABRIC:** 45% Polyester 55% Wool
- **DECORATED IN RANK AS REQUESTED**
- **AVAILABLE ADDITIONAL EMBELLISHMENTS:**
 - Black, Gold or Silver Strap
 - Single or double line, Gold, Bullion maple leaves
 - Maple leaf cap band



Cap Covers also available

Ties



AVAILABLE STYLES:

- **4 IN HAND AVAILABLE IN REG. OR TALL**
- **CLIP ON AVAILABLE IN:**
19", 21", 23" or 25"
- **COLOUR:** Dark Navy
- **FABRIC:** 100% Polyester

Crossover Tie



FEATURES:

- **ONE SIZE**
- **ADJUSTABLE HIDDEN SLIDING NECK ADJUSTER**
- **PEARL FINISH SNAP CLOSURE**
- **COLOUR:** Dark Navy
- **FABRIC:** 100% Polyester

Dress Skirt



CUSTOM MEASURED & TAILORED FOR YOU

COLOURS:
Dark Navy

FABRIC:
45% Polyester 55% Wool

TIE CLIPS

Stock Tie Clips 3D GOLD OR SILVER



CAFC Style

HARD ENAMEL /
3D GOLD OR SILVER

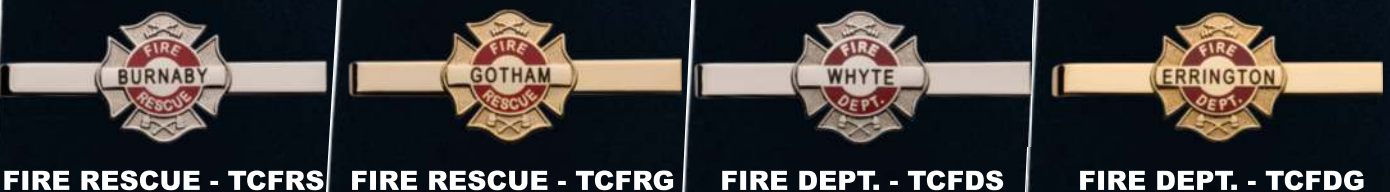


TRAINING OFFICER - TCTOG

Fire Dept. & Fire Rescue Style

HARD ENAMEL / 3D GOLD OR SILVER

& CUSTOM ENGRAVABLE CENTRE!



EPAULETTES

CUSTOM Epaulettes

SEE WHAT OTHERS HAVE CREATED!

**COLOUR, TEXT
AND LAYOUT
OF YOUR CHOICE**



Stock Epaulettes

EMBROIDERED SLIP ON SHOULDER IDENTIFICATION WITH NAME



EPAULETTES



Stock Epaulettes (continued)

EMBROIDERED SLIP ON SHOULDER IDENTIFICATION - THICK BAR



EP2LW



EP2CW



EP2LG



EP2CG



EP2AFCG



EP2DFCG



EP2FCG

Stock Epaulettes - OAFC BRAID

SLIP ON SHOULDER RANK IDENTIFICATION IN WHITE



EPO1W



EPO2W



EPOF1W



EPOF2W

SLIP ON SHOULDER RANK IDENTIFICATION IN NON-METALLIC SILVER OR GOLD



EPO1S



EPO1G



EPO2S



EPO2G



EPO3G



EPO4G



EPO5G



EPOF1S



EPOF1G



EPOF2S



EPOF2G



EPOF3G



EPOF4G



EPOF5G

EPAULETTES

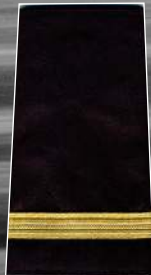


Stock Epaulettes - OAFC BRAID (continued)

SLIP ON SHOULDER RANK IDENTIFICATION IN METALLIC SILVER OR GOLD



EPO1MS



EPO1MG



EPO2MS



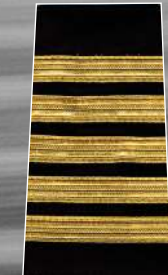
EPO2MG



EPO3MG



EPO4MG



EPO5MG



EPOF1MS



EPOF1MG



EPOF2MS



EPOF2MG



EPOF3MG



EPOF4MG



EPOF5MG

Stock Epaulettes - CAFC BRAID

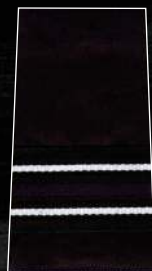
SLIP ON SHOULDER RANK IDENTIFICATION



EPC1S



EPC1G



EPC2S



EPC2G



EPC3G



EPC4G



EPC5G



EPCF1S



EPCF1G



EPCF2S



EPCF2G



EPCF3G



EPCF4G



EPCF5G

METAL PRODUCTS



Custom Made Metal Products

PLEASE CALL FOR DETAILS. HERE ARE SOME EXAMPLES OF OUR CLIENT'S CUSTOM WORK



Service Pins

HARD ENAMEL/3D GOLD WITH A DOUBLE PUSH PIN BACK TO PREVENT ROTATION
APPROXIMATE SIZE, 1" DIA.



PSY5P



PSY10P



PSY15P



PSY20P



PSY25P



PSY30P



PSY35P



PSY40P



PSY45P

METAL PRODUCTS

Tunic Button Collar Dogs

- 3D GOLD OR SILVER (AS PICTURED) w/ A SCREW OR PUSH PIN BACKING TO PREVENT ROTATION
- APPROX. SIZE: 1" DIA.
- SOLD AS A PAIR

PUSH PIN BACKING



OR

SCREW BACKING



BBFSS



BBFSG



BB1S



BB1G



BB2PS



BB2PG



BB2CS



BB2CG



BB3G



BB4G



BB5G

Shirt Collar Dogs

- 3D GOLD OR SILVER (AS PICTURED) w/ A SCREW OR PUSH PIN BACKING TO PREVENT ROTATION.
- APPROX. SIZE: 7/8" DIA.
- SOLD AS A PAIR

PUSH PIN BACKING



OR

SCREW BACKING



BFSS



BFSG



B1S



B1G



B2CS



B2CG



BFDP



B2PS



B2PG



B3G



B4G



B5G

METAL PRODUCTS

Cap Badges

HARD ENAMEL / 3D GOLD OR SILVER

CUSTOM ENGRAVABLE CENTRE!



CBFDS



CBFDG



CBFRS



CBFRG



CBG



CBS

CAFC Cap Badges

HARD ENAMEL / 3D GOLD OR SILVER

Metal Name Bars

HARD ENAMEL / 3D GOLD OR SILVER



FIRE DEPT. - NBFDG



FIRE DEPT. - NBFDS



FIRE RESCUE - NBFRS



FIRE RESCUE - NBFRG

**ENGRAVING
AVAILABLE
IN SINGLE
OR
DOUBLE LINE**

CAFC Metal Name Bars

HARD ENAMEL / 3D GOLD OR SILVER



NBCG



NBCS

AVAILABLE NAME BAR & CAFC NAME BAR BACKING STYLES:



PUSH PIN



STRONG SAFETY PIN



MAGNET

BELTS & BUCKLES

Leather Belt



- EVEN SIZES (FROM SIZE 30-52)
- CAN ACCOMMODATE A CUSTOM ENGRAVED BRASS BELT BUCKLE.

**OUR BELTS ARE INTERCHANGEABLE
WITH OUR BUCKLES**



Belt Buckle

- BRASS BUCKLE FOR USE WITH LEATHER BELTS
- INCLUDES TOP & BOTTOM ENGRAVING WITH THE TEXT OF YOUR CHOICE.

Web Belt Buckles

**HARD ENAMEL / 3D GOLD OR SILVER - AVAILABLE WITH OR WITHOUT WEB BELT
& CUSTOM ENGRAVABLE CENTRE!**



FIRE DEPT. - BELBFDS



FIRE DEPT. - BELBFDG



FIRE RESCUE - BELBFRG



FIRE RESCUE - BELBFRS

CAFC Web Belt Buckles

HARD ENAMEL / 3D GOLD OR SILVER - AVAILABLE WITH OR WITHOUT WEB BELT



BELBCS



BELBCG

SHOULDER CRESTS

Embroidered Shoulder Crests

FEATURES

- CUSTOM CREATED & EMBROIDERED CRESTS
- PLASTIC BACK FOR OPTIMUM DURABILITY DURING DRY-CLEANING
- OUR IN HOUSE ART DEPARTMENT CAN HELP YOU DESIGN OR IMPROVE YOUR CREST AT NO CHARGE
- LOW 25 PIECE MINIMUM
- COLORFAST MATERIALS USED
**Exceptions are Sublimated & Metallic crests*



Backing Options for Embroidered Shoulder Crests



WAX PAPER



HEAT SEAL
(aka GLUE)



PVC PLASTIC
(also available without ZW pattern)



FLEECE



VELCRO
(also available in other colours)

NOMEX Embroidered Shoulder Crests

- WE ALSO HAVE THE ABILITY TO MANUFACTURE SHOULDER CRESTS (ABOVE) IN FLAME RESISTANT NOMEX THREAD & FABRIC
- NO BACKING ON NOMEX EMBROIDERED CRESTS



CASUAL WEAR

Embroidered, Heat-Transfer & Silk-Screened Products

OUR ART DEPARTMENT CREATES CUSTOM ARTWORK AT NO CHARGE!

**Up to 1 hour of complimentary design time*

WE HAVE **HUNDREDS** OF
GARMENT STYLES
AVAILABLE FOR YOUR
CUSTOMIZATION!

- MOISTURE-WICKING GARMENTS
- WOOL SHIRTS
- T-SHIRTS
- LONG SLEEVE T-SHIRTS
- HOODIES
- ZIPPER HOODIES
- JACKETS
- GOLF SHIRTS
- WATER PROOF JACKETS
- BASEBALL HATS
- TOQUES
- SWEAT PANTS
- SHORTS
- ... AND MORE, JUST ASK!



Custom Manufactured Hats

CUSTOMIZABLE OPTIONS

- 3D PUFF
- CUSTOM SANDWICH PEAK
- EMBROIDERED PEAK TOP
- EMBROIDERED STRAP OR AROUND THE BACK
- REFLECTIVE STRAP OR SANDWICH PEAK
- YOU CHOOSE THE HAT FABRIC COLOUR
- YOUR IMAGINATION IS THE LIMIT!

3D Puff Images

Custom Lettering
Sandwich Peak



Embroider Around The Back
or Right Onto The Strap



Embroider Right
Onto The Brim

HELMET SHIELDS & DECALS

Embroidered Helmet Shields

FEATURES

- NOMEX BACKGROUND SHIELDS
- EMBROIDERED w/ FLAME RETARDANT NOMEX ON A LEATHER OR HIGH REFLECTIVE MICROLIGHT BACKGROUND
- VELCRO BACKED

**POPULAR OPTION:
MULTI-PIECE VELCRO
ACCOUNTABILITY SYSTEM**



**CHOOSE YOUR OWN
COLOUR COMBO!**



Custom Decals

CALL FOR DETAILS



DECALS

Stock Reflective Helmet Decals



BACKGROUND COLOUR

Reflective Silver

PRINT & BORDER COLOUR

Black



HSDRFF



HSDRL



HSDRC



HSDRDC



HSDRAC



HSDRFC



HCRFC



HCRJFF



HCRFC



HCRAC



HCRPC



HCRDC



HCRBC



HCRC



HCRFF



HCRL



HCRTO



HCRBAC



HCRSO



HCRDIC



HCRFA

BACKGROUND COLOUR

Reflective Silver

PRINT COLOUR

Black



HCRFR

BACKGROUND COLOUR

Reflective Silver

PRINT & BORDER COLOUR

Blue



HCREMS



HCREMT



HCRFR



HCRCF

BACKGROUND COLOUR

Reflective Silver

PRINT COLOUR

Red



104 - 20145 Stewart Crescent, Maple Ridge, BC V2X 0T6

Phone: (604) 460-2828 Toll free: (888) 912-7378

Fax: (604) 460-2006 Toll Free Fax: (866) 797-2824

fahrenheit@zonewest.ca

www.fahrenheituniforms.com www.zonewest.ca